




Sussex Rural Electric Cooperative, Inc.

A Touchstone Energy® Cooperative 

CURRENTS

NJ Rural Electric Cooperative Act

By Chris Reese

contactthceo@sussexrec.com

I have some good news to report! On Monday, January 15, 2018, Governor Christie signed into law our bill S2180, also called the NJ Rural Electric Cooperative Act. This bill was sponsored by Senator Steven Oroho, who pushed very hard for this bill and really helped us get it through first the Senate, then the Assembly (with some assistance from Assemblyman Parker Space) and then to the Governor's office.

This bill benefits the Cooperative in a few different ways. First, it officially has us recognized by the state as a true, not-for-profit, member-owned Cooperative. This is a critical designation if we ever have to apply for aid from FEMA (Federal Emergency Management Agency) again for any kind of disaster that might strike our area. If you recall, we had three major disasters within 14 months in 2011-2012: Hurricanes Sandy and Irene, and also that big Halloween snowstorm. All three were FEMA-covered disasters that allowed the Cooperative to recover up to 90% of our costs for restoration after the storms. FEMA funding is available to electric cooperatives to keep electricity costs reasonable and to ensure smooth recoveries from natural disasters. Without that reimbursement, we would likely have had to raise rates to recover over almost two million dollars. The State of New Jersey was reluctant in confirming our FEMA eligibility, because of a technicality where we are incorporated in the state as a for-profit company. In 1937, when Sussex REC incorporated in NJ, state law did not allow for us to incorporate as a private, non-profit organization. This bill will recognize us in the state as what we are, and should hopefully eliminate any future FEMA red tape and protect our members if another natural disaster was to hit our service territory.

This bill also puts us in line with the other nine municipal utilities in the state, exempting us from future NJ Corporate Business Tax payments. Additionally, we will no longer have to escheat capital credits to the state. In the past, when we could no longer locate a member that moved away, we would have to escheat their capital credits to the state after three years had passed. Now, with the passage of this bill, the Cooperative will be able to retain those capital credits, and if a member gets in touch with us, we will get them their credits. In most other states, the Cooperatives get to retain their capital credits for members that can not be located, and now we will too.

The NJ Rural Electric Cooperative Act is a great thing for Sussex Rural Electric. And again, without Senator Oroho's help and support, it never would have been possible.



Chris

FEBRUARY 2018

**NJ Rural Electric
Cooperative Act
Page 1**

**School & Scout
Support
Page 2**

**Youth Tour
Page 3**



CURRENTS

is published monthly by

Sussex Rural

Electric Cooperative

64 County Route 639

Sussex, NJ 07461

www.sussexrec.com

Phone: 973.875.5101

Fax: 973.875.4114

✉ info@sussexrec.com

Board of Directors:

Jack S. Haggerty Jr.....Chairman

William Kovach.....Vice Chairman

Raymond Cordts.....Sec/Treasurer

Barbara Miller Thomas Madsen

Ronald Dupont Brad Sparta

Richard Wetzel Michael Hopkins

President/CEO: Christopher P. Reese

February 2018

Volume XVIII, Issue II

www.sussexrec.com

Building the next generation of **LEADERS**

Whether it's teaching grade-schoolers about energy efficiency, sending teens to Washington, D.C. for Youth Tour, or sending graduates off to college with a scholarship, Sussex Rural Electric Cooperative is actively helping to build the next generation of community leaders.



Electrical safety is very important regardless of age. Sussex Rural Electric Cooperative offers safety programs for class trips or school visits. The educational programs focus on what electric power is, where it comes from, and the dangers that surround it. We have found that students of all ages enjoy asking questions and have a lot of curiosity about electricity. The question and answer time is always beneficial for all students. The presentation utilizes handouts, activity sheets and our "Hazard Hamlet" Module, a fully integrated display which incorporates sight and sound into training young people about the dangers of electricity in everyday situations. The demonstration is an eye opening experience complete with sparks, sounds, and small power arcs. "Hazard Hamlet" is an educational device designed with a dynamic and interactive design, which brings the message home in a very dramatic way that keeps the attention of young children for optimal results in learning and retention.

If the class and weather permits, the students will spend a portion of the presentation time outside to see a bucket truck up close and have a lineman explain the importance of safety and what it is like to be a lineman.

Trips start in March and are held Tuesday, Wednesday and Thursdays from 1:00 pm –3:00 pm. The visits to the Cooperative last approximately 1.5 hours and are limited to 30 students and/or scouts. If you would like to schedule a trip to SREC or have any questions regarding our School & Scout support program, please contact Claudia Raffay, Manager of Marketing & Member Services at craftay@sussexrec.com or call 973/875-5101.



Attention High School Juniors

★ We Want You! ★



Youth Tour 2018

June 9-15, 2018

Young people who experience Youth Tour have the opportunity to explore our nation's capital, make lasting friendships, learn about how our government operates and see the impact electric cooperatives have on the legislative process.

More than 1,700 students from 43 states all across America take part in the Youth Tour experience each year, and so can you! Travel to Washington, D.C., where you will meet your U.S. Representatives and Senators. This unique trip will give you the opportunity to watch history come alive as you explore the museums, memorials and monuments with students from New Jersey and Pennsylvania. You will meet student leaders from nearly every state and hear dynamic leaders on Youth Day.

Bottom line, you will make friendships that will last a lifetime and be part of a group that has more than 50,000 alumni in every walk of life including U.S. Senators and CEOs. Three Juniors will be chosen by Sussex Rural Electric Cooperative for this trip of a lifetime to Washington, DC.

Apply now at www.sussexrec.com. All applications and required information must be received no later than February 2, 2018. Youth Tour participants will be announced on March 2, 2018.

There are many great co-op programs out there that focus on youth education and engagement. But what all of these programs have in common, no matter how big or small, is the fact that electric cooperatives come together for a common cause to not only teach our youth about the cooperative difference, but to give them the opportunity to see and reach their potential. Whether it's teaching grade-schoolers about energy efficiency, sending teens to Washington, D.C. for Youth Tour, or sending graduates off to college with a scholarship, Sussex Rural Electric Cooperative is actively helping to build the next generation of community leaders.

Scholarship programs are also available to children of cooperative members. Applications for scholarships are available at your guidance department or at www.sussexrec.com. Apply today and secure your tomorrow.

Space Heater Safety Tips

Space heaters are a great way to warm specific rooms in your home without having to crank up the thermostat, but using space heaters doesn't come without risk! Use the tips below to keep your home safe.

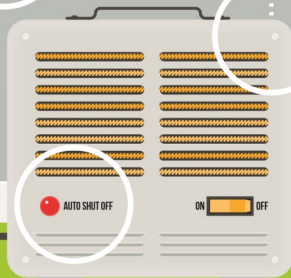
DO: Plug your space heater directly into the wall outlet.



DO: Keep your space heater in low-moisture rooms.

DO: Keep your space heater at a safe distance (at least 3 feet) from kids, pets and flammable items.

DO: Buy a unit with an automatic shutoff in case the unit tips over, or you forget to shut it off.



DO: Always follow the directions and take a broken space heater to a qualified appliance service center.



DON'T: Leave your space heater unattended. Always unplug it before you leave the house or go to bed.

DON'T: Use an extension cord to plug in your space heater. It can cause the heater to over-heat, and can be a tripping hazard.

DON'T: Place your space heater near curtains, clothing, furniture or bedding.

DON'T: Try to repair a broken space heater yourself.

DON'T: Put your space heater in your bathroom. The moisture can damage the unit, which could cause it to malfunction.

Note: Space heaters are not meant to heat large areas of your home. A space heater can increase your electric bill if not used properly.

FOCUSED ON YOUR STREET. NOT WALL STREET.

Your Touchstone Energy cooperative is owned by our members, not shareholders. So we don't just answer to you, we have answers for you. To learn more, visit TouchstoneEnergy.com.

YOUR SOURCE OF POWER. AND INFORMATION.



Sussex Rural
Electric Cooperative, Inc.
A Touchstone Energy Cooperative

Lightning was powering through the clouds outside. Thanks to your planning, their story time, and life as you know it, continued inside.



Cummins Connect Series
home standby generators

Safeguard against power line failure with a Cummins standby generator. Call your authorized Cummins dealer today so you are prepared for when the next storm arrives.

Powering your life.



Like us on
facebook

Energy Efficiency Tip of the Month

Consider insulating your hot water pipes. Doing so can reduce heat loss, allow you to lower the temperature setting and save an additional 3 to 4 percent per year on water heating.

Source: energy.gov



**SREC
RESOURCES, INC.**

RESIDENTIAL, COMMERCIAL & INDUSTRIAL GENERATORS

NJ Licensed Electrical Contractor #15375A

973.875.1365

generators@sussexrec.com

It's not magic, it's ETS!

Electric Thermal Storage Heating

The "magic" of the cost effectiveness of

Electric Thermal Storage (ETS) is the ability to store heat during off-peak billing hours for use during higher priced on-peak billing hours.

An ETS furnace offers several distinct advantages:

- ⇒ No oil tanks or fuel deliveries to worry about.
- ⇒ No wide price fluctuations that make budgeting difficult.
- ⇒ No burners to maintain or fumes to vent.
- ⇒ Quieter operation—practically no sound.

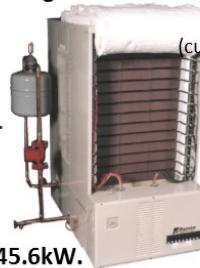
A variety of furnace sizes available ranging from 19.2kW—45.6kW.

For more information go to www.sussexrec.com or give us a call at 973.875.5101

ETS Room Unit
(cutawayview)



ETS Furnace
(cutaway)



MADE IN THE
USA



Our office will be
closed in observance of
Presidents' Day



MONDAY, FEBRUARY 19, 2018

Prefer the
inbox over
the mailbox?

Choose your option and
sign up today to go
paperless!



www.sussexrec.com